



WHAT WE OFFER

- AN EXPERIENCE TO STUDY AT MALAYSIA'S OLDEST UNIVERSITY
- A CHANCE TO EXPLORE THIS GREEN AND SUSTAINABLE CAMPUS IN KUALA LUMPUR
- AN EDUCATIONAL TRIP TO LEARN ABOUT ONE OF THE MOST DIVERSE COUNTRIES IN THE WORLD
- A FUN WAY TO OPEN YOUR MIND AND IMPROVE YOUR WORLDVIEW ON PEOPLE, CULTURE AND LANGUAGES.

Plan your next learning experience with us!



Let's Chat!



UM Languages and Linguistics



• **+603-79673177**



CULTURAL & LANGUAGE ENRICHMENT PROGRAMME (C.L.E.P)



**FACULTY OF LANGUAGES AND LINGUISTICS,
UNIVERSITI MALAYA**

1 WEEK

**(SUMMER PROGRAMME)
(JULY)**



FIELD TRIP

Kuala Lumpur City Tour



*ADDITIONAL TRIP

Malacca City Tour & River Cruise

or

Ipoh City Day Trip



MODULE

Language Class for Beginners
and
Culture and Society of Malaysia



WORKSHOP

Batik Painting

or

Calligraphy



PROGRAMMES OFFERED

- MALAY LANGUAGE
- TAMIL LANGUAGE
- CHINESE LANGUAGE
- ENGLISH LANGUAGE
- ARABIC LANGUAGE
- SPANISH LANGUAGE
- JAPANESE LANGUAGE
- THAI LANGUAGE
- PORTUGUESE LANGUAGE

MIN PAX

15-20 PERSONS

PROGRAMME FEES

USD\$1000

- Inclusive of tuition & excursion fees, accommodation & meals during class
- Special early bird price available



WHAT WE OFFER

- AN EXPERIENCE TO STUDY AT MALAYSIA'S OLDEST UNIVERSITY
- A CHANCE TO EXPLORE THIS GREEN AND SUSTAINABLE CAMPUS IN KUALA LUMPUR
- AN EDUCATIONAL TRIP TO LEARN ABOUT ONE OF THE MOST DIVERSE COUNTRIES IN THE WORLD
- A FUN WAY TO OPEN YOUR MIND AND IMPROVE YOUR WORLDVIEW ON PEOPLE, CULTURE AND LANGUAGES.

Plan your next learning experience with us!



Let's Chat!



UM Languages and Linguistics



• +603-79673177



CULTURAL & LANGUAGE ENRICHMENT PROGRAMME (CLEP)



FACULTY OF LANGUAGES AND LINGUISTICS,
UNIVERSITI MALAYA

2 WEEKS

(SUMMER PROGRAMME)
(JULY - AUGUST)



FIELD TRIP

Kuala Lumpur City Tour
Selangor Day Trip



*ADDITIONAL TRIP

Malacca Tour & Homestay (2D1N)
or
Perak Tour & Homestay (2D1N)



*Select 1 trip

MODULE

Language Class
and

Culture and Society of Malaysia



WORKSHOP

Batik Painting
and
Malaysian Cuisine



PROGRAMMES OFFERED

- MALAY LANGUAGE
- TAMIL LANGUAGE
- CHINESE LANGUAGE
- ENGLISH LANGUAGE
- ARABIC LANGUAGE

MIN PAX

15-20 PERSONS

PROGRAMME FEES

\$1500

*Inclusive of tuition & excursion fees,
accommodation & meals during class
*Special price available for early birds



WHAT WE OFFER

- AN EXPERIENCE TO STUDY AT MALAYSIA'S OLDEST UNIVERSITY
- A CHANCE TO EXPLORE THIS GREEN AND SUSTAINABLE CAMPUS IN KUALA LUMPUR
- AN EDUCATIONAL TRIP TO LEARN ABOUT ONE OF THE MOST DIVERSE COUNTRIES IN THE WORLD
- A FUN WAY TO OPEN YOUR MIND AND IMPROVE YOUR WORLDVIEW ON PEOPLE, CULTURE AND LANGUAGES.

Plan your next learning experience with us!



Let's Chat!



UM Languages and Linguistics



• +603-79673177



CULTURAL & LANGUAGE ENRICHMENT PROGRAMME (CLEP)



FACULTY OF LANGUAGES AND LINGUISTICS,
UNIVERSITI MALAYA

4 WEEKS

(SUMMER PROGRAMME)

(MID JULY - MID
SEPTEMBER)



FIELD TRIP

Kuala Lumpur City Tour
and
Selangor Tour & Homestay (2D1N)



*ADDITIONAL TRIP

Malacca Tour & Homestay (2D1N)
or
Perak Tour & Homestay (2D1N)
or
Penang Tour & Homestay (2D1N)



*Select 1 trip

MODULE

Language Class
and
Culture and Society of Malaysia



WORKSHOP

Malaysian Cuisine & Batik Painting
or
Calligraphy & Malaysian Traditional Game



PROGRAMMES OFFERED

- MALAY LANGUAGE
- TAMIL LANGUAGE
- CHINESE LANGUAGE
- ENGLISH LANGUAGE
- ARABIC LANGUAGE

MIN PAX

15-20 PERSONS

PROGRAMME FEES

\$2000

*Inclusive of tuition & excursion fees,
accommodation & meals during class
*Special price available for early birds

INTERNATIONAL INDIGENOUS MOBILITY PROGRAMME @ UM



Program Overview

The notions of **indigeneity** and modernity has been an ongoing scholarly discourse, and **Indigenous people** has been cast as the ideal types representing a phenomenon of traditional fading into certain transformations. These transformations sometimes brought crisis in their **culture, identity, practices and belief**. Despite all these challenges, **Indigenous communities** in **Malaysia** still hold their tradition and cultural practices with certain level of outside influence to adapt as a strategy for continuation. This **3-week programme** attempts to expose students **to experience the contentment** of Indigenous people especially **Indigenous youth** in **learning, retaining and adapting their tradition**.

Come and join us for a spectacular discovery!

traditional cuisine tree planting cultural
guided tours art music work visits
craft shops forest
orang utan rehabilitation homestay culinary

scan me for more info!



Learning Outcomes

- To enrich global mindset through **cross-cultural learning** and experience with **different Indigenous communities**
- To enhance **critical thinking** and finding **solutions** to community challenges and struggles
- To develop **creativity** through the participations in Indigenous cultural activities

LONG-TERM MOBILITY PROGRAMME

WHY UM?



- Strategic location
- Great diversity
- World's Top 100 University
- Strong international collaboration

DURATION



- 1 semester & up to 2 semesters
- Semester 1 (Fall): October - February
- Semester 2 (Spring): March - July

MULTI DISCIPLINARY



- Able to take up to 20 credits
- Register modules from different faculties/academies/centres



www.gem.um.edu.my



MEDIUM OF INSTRUCTION



- Sciences: 90% in English
- Social Sciences: 80% in English, 20% in Malay or other selected foreign languages

FEES



- Tuition fee
 - Partner: as per agreement
 - Non-partner: USD1,000
- Admin fee: USD150

WHEN TO APPLY?



- Semester 1 (Fall)
 - 1 March - 30 April each year
- Semester 2 (Spring)
 - 1 September - 31 October each year

FOR MORE INFORMATION



Global Enrichment & Mobility (GEM) Division
Level 1, Block G, Perdanasiswa Complex,
Universiti Malaysia, 50603 Kuala Lumpur, Malaysia



<http://www.gem.um.edu.my>
<https://www.um.edu.my>



studyabroad@um.edu.my



+603-7967 7711 / 7716 / 7714 / 7713



@gem.um



Global Enrichment & Mobility
Division, Universiti Malaysia



Global Enrichment & Mobility
(GEM) Division

SHORT-TERM MOBILITY PROGRAMMES

BUSINESS & MARINE SCIENCE



- Explore 3 top universities in Malaysia!
- Dive deep into the people, cultures, exotic marine life, and the socio-economic aspects of Malaysia

INTERNATIONAL INDIGENOUS MOBILITY



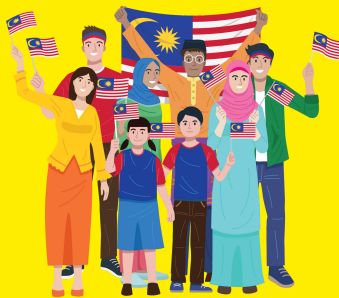
- Cross-cultural learning with different indigenous communities
- Cultural workshops, homestay, cultural visits, traditional cuisine, tree planting, forest culinary

EDUCATION FOR SUSTAINABLE DEVELOPMENT



- Learn the uniqueness of sustainability practices in Malaysia
- Explore the Regional Centre of Expertise on ESD, EcoCampus living labs, citizen science, and actual sustainability intervention

BUSINESS, LANGUAGE & CULTURE



- Learn and practice the English language
- Understand the basic structure of Malaysian economy
- Foster network among international friends

MOBILITY ATTACHMENT



- More than 50 research centres that promotes multi-disciplinary, inter-disciplinary and translational research
- Maximum duration of 12 months
- Supervised by an appointed UM Lecturer

CUSTOMIZED PROGRAMMES



- Personalized learning experiences
- Focus on your preferred subjects
- Reach out to us to explore customized programmes for your students

FOR MORE INFORMATION



Global Enrichment & Mobility (GEM) Division
Level 1, Block G, Perdanasiswa Complex,
Universiti Malaysia, 50603 Kuala Lumpur, Malaysia



<http://www.gem.um.edu.my>
<https://www.um.edu.my>



studyabroad@um.edu.my



+603-7967 7711 / 7716 / 7714 / 7713



@gem.um



Global Enrichment & Mobility
Division, Universiti Malaysia



Global Enrichment & Mobility
(GEM) Division

MOBILITY ATTACHMENT @ UM

With **more than 50 research centres** within its vicinity that cover a diverse spectrum of research clusters that promotes **multi-disciplinary, inter-disciplinary and translational research**, Universiti Malaya is always at the forefront in its research capacity.

Supplemented by its proven track record of producing **thousands of finest quality and high-impact publications** all around the globe, we would now like to **invite exceptional talents like yourself** to be part of our community of excellence.

Our **Mobility Attachment** is a program whereby students from external institution attach with Universiti Malaya for a **maximum duration up to 12 months**. Students will be supervised by an appointed UM Lecturer(s) / Professor(s) during the attachment duration.

**IF YOU
WANT TO
BE THE
BEST,
LEARN
FROM THE
BEST**

SCAN ME



FOR MORE INFO

HERE'S SOME QUICK TIPS

Identify the **preferred area of research or fields** that you would like to focus for the attachment

Identify **suitable supervisors** via umexpert.um.edu.my



Get to know and connect with our
Indigenous Community
and learn ways on how you can support them

Join us in
UM Tropical Camp
and take part in
environmental awareness
and support the related
SDGs



Participate in our
Community Engagement
and learn more about the
important issues in our
community

WHY UM ? GREAT REASONS TO STUDY HERE!

- Strategic Location
- Research University Status
- Great Diversity
- World's Top 100 Universities
- World-Wide Recognition
- Strong International Collaboration

Visit our website:

<https://gem.um.edu.my/>



Global Enrichment & Mobility (GEM) Centre
Level 1, Block G, Perdanasiswa Complex
University of Malaya
50603 Kuala Lumpur, MALAYSIA Email:
studyabroad@um.edu.my

Contact Us:

Mr. Sanjeev Raj Gopal

Email : sanwk30@um.edu.my

Tel : (6)03 7967 7716

Mr. Muhammad Ridzwan Mohd Rashid

Email : wanridz@um.edu.my

Tel : (6)03 7967 7716



INBOUND LONG TERM MOBILITY PROGRAMMES

Programme Duration

1 semester & up to 2 semesters

*Duration can be shortened but
can not be extended

Courses Offered

Multidisciplinary

- Allowable to take up to 20 credits
- Min. 2 subjects up to 7 subjects from multiple academy/faculty/centre

Medium of Instruction

Science based courses:
90% in English

Arts based courses:
70% in English; 30% in
Malay/Mandarin/Tamil/ selected
foreign languages

Fees



Tuition fee: *As per agreement*
Partner University Students



Tuition fee: *MYR 10,000*
Non-Partner University Students



Administration fee: *MYR 750*

- Total fee = Administration fee + Tuition fee
- Administration fee is **non-refundable**

Requirements

- CGPA $\geq 3.0/4.0$ or equivalent
- IELTS Band 6, TOEFL iBT 80,
TOEFL CBT 213. TOEFL ITP 627,
TOEFL PBT 550, TOEIC 693

Nomination & Application

Semester 1 (Sept. Admission):

1 Mar – 30 Apr each year

Semester 2 (Feb. Admission):

1 Sep. – 31 Oct. each year

How to Apply

Online application:

<https://apply.um.edu.my/>





UNIVERSITI
MALAYA



BUSINESS, LANGUAGE, CULTURE PROGRAMME @ UM

- ✓ Industrial Visits & Expert Talks
- ✓ Malaysian Cultural Workshops
- ✓ Fun & Interactive English Classes

scan here
to find out
more!



gem.um.edu.my | studyabroad@um.edu.my | +60379677711 / 7713

ABOUT

This program is designed for students to **learn and practice the English language**. Participants will understand the basic structure of the **Malaysian economy**, its transformation and the factors that drive the **economic growth**. Participants will learn through classroom teaching and engage in **activities** together with **Student Buddies**. Participants will be exposed to **diverse cultural environment** through various activities.

EXPLORE BEYOND THE CLASSROOM AND RETURN WITH UNFORGETTABLE MEMORIES

LEARNING OUTCOMES

To provide a platform for students to experience living in the diverse culture in Malaysia

To nurture young future leaders with global understanding

To provide a better understanding of the Malaysian culture, economic and social system

To provide a platform for students to increase their level of confidence in using English as a medium of communication

SNEAK PEEK INTO THE PROGRAM

Business & English Language Classes

A combination of various learning outcomes from different courses: language, economy, culture

Homestay & Cultural Activities

Discover Malaysia by immersing yourself in an authentic Malaysian experience

Buddies Engagement

Foster network among international friends



Basic Malay Language Course

About The Program

The course provides lessons to international students to master elementary Malay. The course encompasses the four skills of speaking, listening, reading and writing necessary for general communication in Malay. Emphasis will be given to oral and writing exercises.

Learning Outcomes

- Correctly pronounce syllables, words, phrases and expressions in Malay
- Use simple Malay sentences appropriately in daily conversation
- Write simple short paragraphs

Contact Hours

Total: 120 hours

- Face-to-face: 44 hours
- Student Preparation Time: 76 hours

For more info :

☎ +603- 7967 7711 / 7713

✉ studyabroad@um.edu.my

EDUCATION FOR SUSTAINABLE DEVELOPMENT

MOBILITY PROGRAMME @ UM



About the Programme

This brand-new short-term mobility program offers the participant a first-hand experience on Education for Sustainable Development (ESD) in a new interactive way!

This 3-week program covers a wide range of sustainability topics, including an introduction to the Sustainability@UM, Regional Centre of Expertise on ESD, EcoCampus living labs, citizen science, and actual sustainability intervention in different contexts.

Participants will gain exposure to intellectual exchange and better understand the localization of ESD in Malaysia from the experience of Universiti Malaya; the oldest Malaysia's public university and Asia's Most Sustainable University in City-Centre category (2017-2021) in UI GreenMetric World University Rankings.

Scan me to know more!



LEARNING OUTCOMES

Participants will...

- Foster networking among international participants while exploring future engagement opportunities in various forms
- Better understand the fundamental sustainability knowledge (both theory and practical) on Education for Sustainable Development
- Learn the uniqueness of sustainability practices in Malaysia through the localization of the sustainable development agenda
- Explore the ESD initiatives from the Regional Centre of Expertise (RCE) on ESD network members (RCE Penang, RCE Iskandar, RCE Greater Gombak or RCE Kuching).

